



OWNER'S MANUAL

MODEL M66V

MEDIA AIR CLEANER

The M66 from Air Quality Engineering, Inc. is a self-contained media air cleaning system designed for use in source capture applications where mobility is desired. The M66 can be ordered in a three-stage filtration which will effectively remove a broad range of airborne contaminants including fine dust, smoke, soot, vapors, mist, VOC's and more at a rate of up to 2000 cfm.



TABLE OF CONTENTS

	PAGE
PRINCIPLES OF OPERATION	2
DIMENSIONS	3
SPECIFICATIONS	4
PLANNING THE INSTALLATION	4
ASSEMBLY	5
CHECKOUT AND OPERATION	6
ADJUSTMENTS	7
MAINTENANCE	7 - 8
ELECTRICAL SCHEMATICS	9
PARTS LIST	10
EXPLODED VIEW OF M33V AIR CLEANER	11
WARRANTY	12

HOW AIRBORNE CONTAMINATION IS REMOVED

Dirty air passes through the prefilter. Large particulate, such as lint, is removed by the prefilter. The remaining smaller particulate is then captured by the primary filter. As the contamination load on the filters increases, the filters become more efficient in capturing the

smaller particles. At the same time, however, the dirty filter allows less air to pass through resulting in less particle collection and a decrease in the overall effectiveness of the air cleaner.



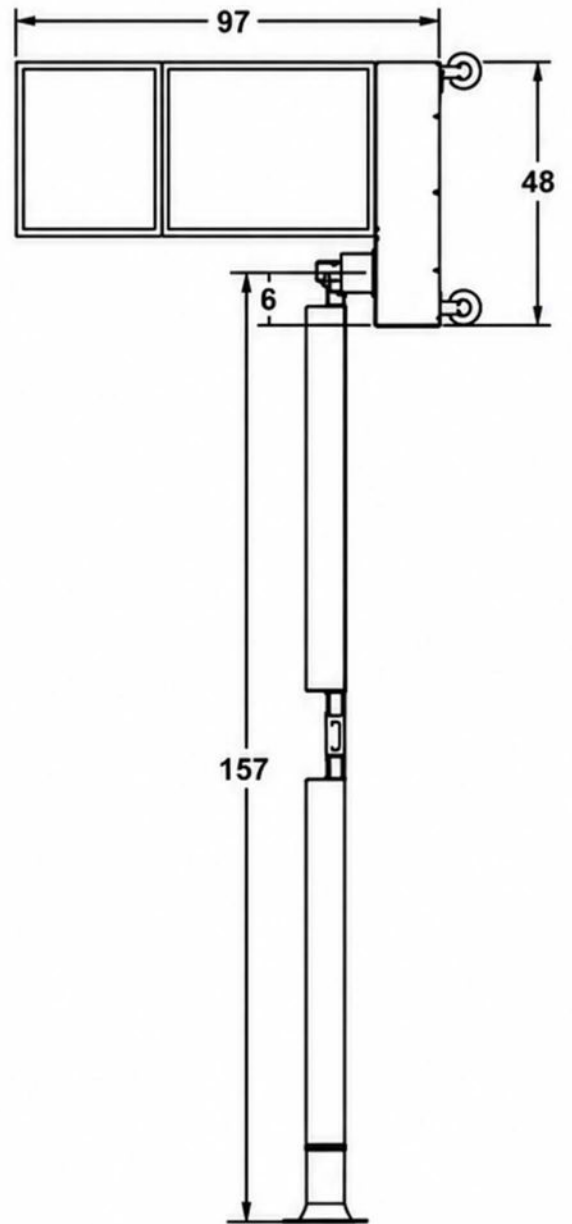
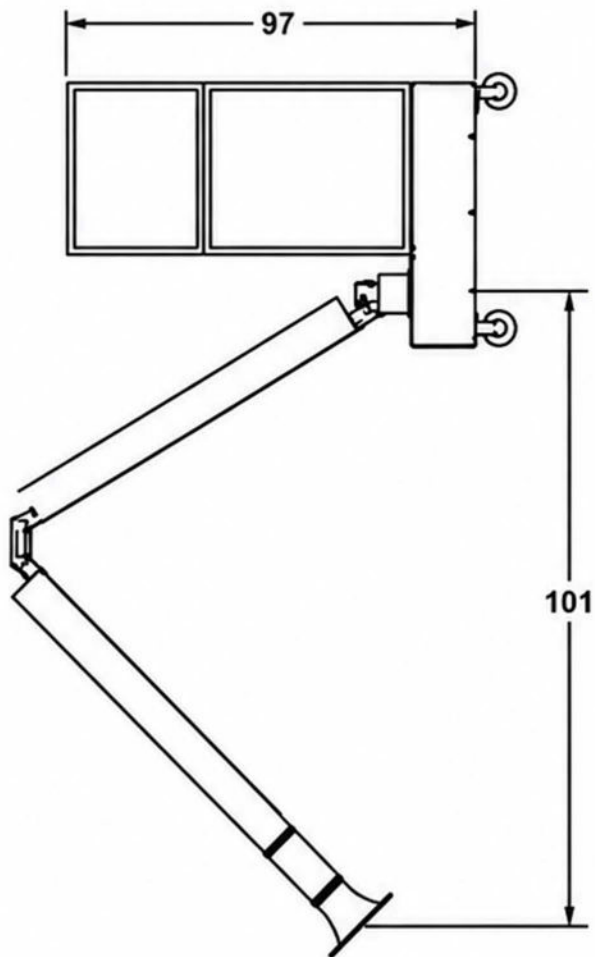
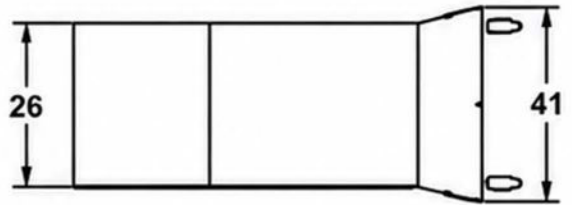
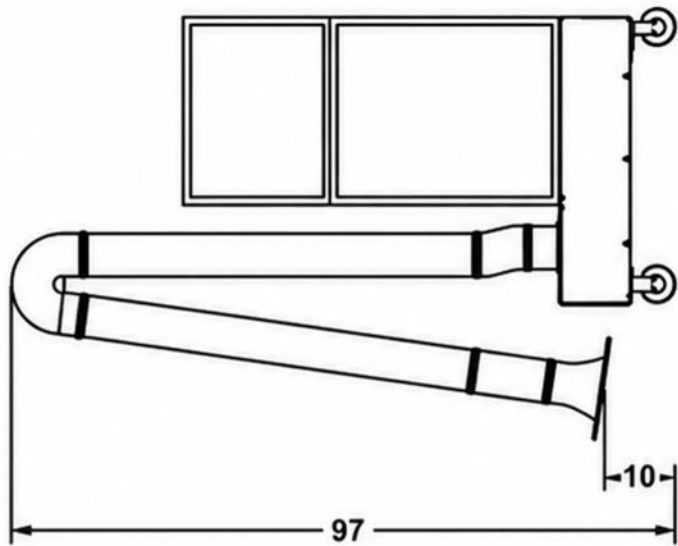


FIGURE 1 - M66V DIMENSIONS

SPECIFICATIONS

IMPORTANT

THE SPECIFICATIONS GIVEN IN THIS PUBLICATION DO NOT INCLUDE NORMAL MANUFACTURING TOLERANCES. THEREFORE, THIS UNIT MAY NOT MATCH THE LISTED SPECIFICATIONS EXACTLY. ALSO, THIS PRODUCT IS TESTED AND CALIBRATED UNDER CLOSELY CONTROLLED CONDITIONS, AND SOME MINOR DIFFERENCES IN PERFORMANCE CAN BE EXPECTED IF THOSE CONDITIONS ARE CHANGED.

Specifications:

Dimensions: 73" H x 20" W x 40" L

Weight: 368 lbs. Installed weight
440 lbs. Shipping weight
Optional carbon module adds 60 lbs to both installed and shipping weight.

Cabinet: 16-gauge welded steel cabinet, Baked enamel textured coated finish. Built-in sump and drain connection for oil mist removal. Four heavy-duty casters, two swivel and lock.

Power Input:

Voltage	Phase	1 Hp Amps	2 Hp Amps	3 Hp Amps
110 – 120	1	12	NA	NA
204 – 240	1	6.6	9	NA
208 – 240	3	3.8	7	9
440 - 480	3	1.9	3.5	4.4

Motor: 1 HP sealed ball bearings. Thermally protected. Adjustable motor sheave allows for field adjustments to the rated airflow.

Blower: Forward-curved, belt-driven centrifugal blower capable of moving up to 4,400 CFM free air.

Instrumentation: **Dirty Filter Gauge** - Factory-installed pressure gauge for monitoring filter replacement cycles.

Indicator Light - Shows blower motor power status.

Mechanical Arm: Thirteen-foot externally supported arm swings 180° on its axis. Once this arm is positioned,

the hood and hose remain in place until moved.

This unit is to be used exclusively for source control in industrial applications in California.

Prefilter: 30–35%, pleated, 24" x 24" x 4" Airflow\Efficiency

Stock No.	Filter	(CFM–Cubic Feet Minute per 8" Arm)					
		1 Hp		2 Hp		3 Hp	
		1 Arm	2 Arm	1 Arm	2 Arm	1 Arm	2 Arm
41072	95% Bag	1155	865	1575	1050	1665	1245
41056	85% Bag	1170	870	1595	1065	1675	1260
41055	65% Bag	1175	915	1600	1115	1700	1320
41057	50% Bag	1190	955	1620	1170	1725	1375

*Efficiency based on ASHRAE Dust Spot 53-76.

Carbon Filter Option – PN 07055: Forty-four lbs. activated, refillable carbon module. If the carbon filter module is to be used as the third stage of filtration behind the prefilter and primary filter, then the optional extended service filter will be substituted for the standard bag to allow room for the carbon filter. Please note that the maximum air flow rating for the carbon module is 1000 cfm. If the carbon filter is ordered, the air flow will be factory-set at 1000 cfm.

Noise Level:

Distance in Feet	1 HP
9 Feet	67 dBa
15 Feet	66 dBa

Air Quality Engineering, Inc. has a policy of continuing product improvement and reserves the right to make changes in design and specifications without notice.

PLANNING THE INSTALLATION

WARNING

The M66V Industrial Roll-Around Media Air Cleaner is NOT explosion-proof. Do not locate or operate this unit where combustible gases, vapors, or dust may be

Clean air is governed by multiple laws and standards established by organizations such as OSHA, ASHRAE, and other recognized safety authorities. These regulations define acceptable indoor air quality levels in industrial and commercial environments.

Media air cleaners are commonly used to reduce airborne contaminants and improve overall air quality. However, they must not be installed or operated in areas where explosive gases, vapors, or combustible dust may be present. Proper application is essential for safe and effective performance. If there is any uncertainty regarding the correct application of this unit, contact your nearest Smokemaster® representative for assistance.

SIZING

Sizing is the process of determining the amount of air cleaning necessary in any given application. Since the M66V is a source capture air cleaner, the sizing process is relatively simple-provide one source capture hood per contaminant source.

LOCATION

For most efficient operation, the M66V source capture hood should be placed as close to the

contaminant source as possible. The maximum distance between the contaminant producer and the source capture hood should not exceed 18 inches. Therefore, in locating the M66V, be sure that the mechanical arm is capable of extending the source capture hood to within 18 inches of the contaminant source.

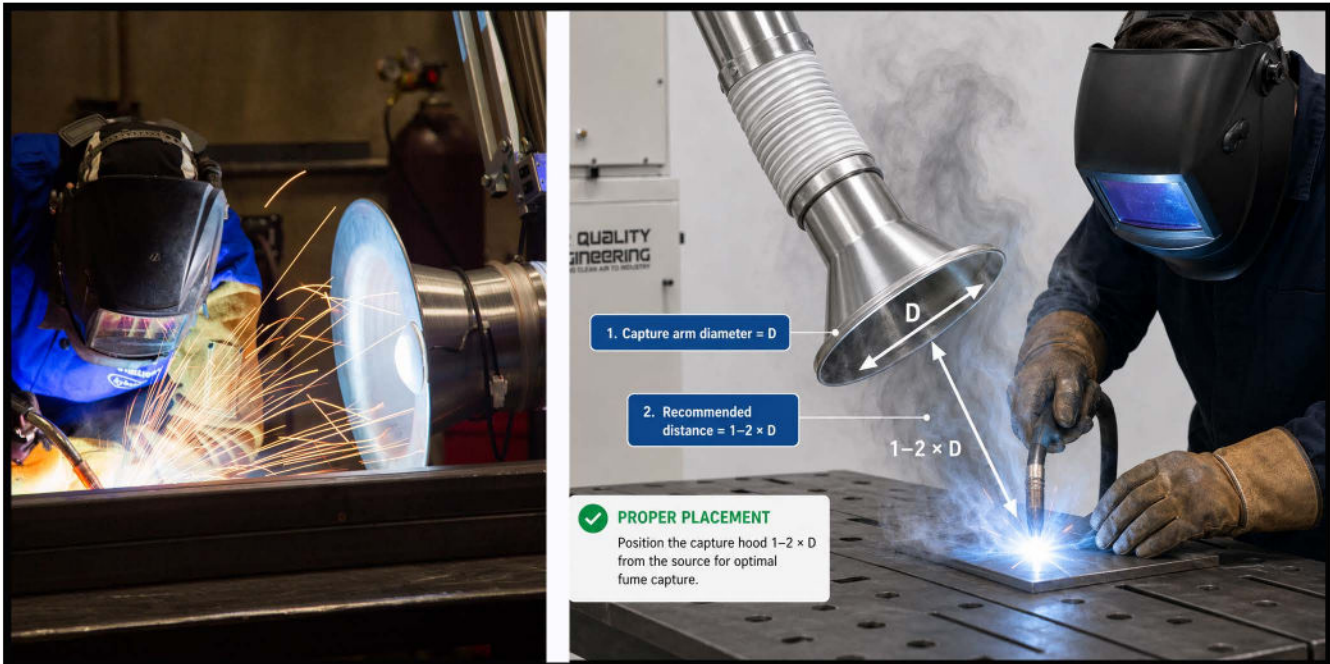


FIGURE 2 - EXAMPLES OF PROPER M66V CAPTURE HOOD LOCATIONS

ASSEMBLY

WHEN ASSEMBLING THIS PRODUCT

1. Read these instructions carefully. Failure to follow them could damage the product or cause a hazardous condition.
2. Check the electrical ratings given on the air cleaner schematic to the power source to insure compatibility.
3. After assembly is complete, check out the product operation as provided in these instructions

CAUTION

1. Do NOT connect the power source until the air cleaner is completely assembled.
2. If the air cleaner must be turned on for an electrical check, be extremely careful in avoiding electrical shock. Also, take care to avoid the air cleaner's moving parts.

UNPACKING

The M66V is shipped completely assembled except for the mechanical arm. The mechanical arm assembly is packaged in a separate box. Remove all shipping cardboard and banding. Be sure to inspect the packaging material before discarding it.

ASSEMBLING THE M66V

Tools needed:

1. 7/16" wrench

NOTE: See Figure 1, Page 3, when assembling the M66V.

Step 1

Do not cut the band holding the arm together until after the arm has been mounted. Fully assemble arm before mounting on cart. To make lifting the arm easier hoist arm from the center joint.

Step 2

Remove the bolts holding down the spacer rings on the M66V. Keep the spacer rings aligned with the holes on the cart.

Step 3

Grease the flange on the base of the arm.

WIRING

The M66V has no special wiring requirements. It comes equipped with a 10-foot power cord and plug. The power source must be compatible with the voltage and frequency of the M66V. The rating on the M66V is located on the schematic on the inside of the filter access door. Route the power cord so that it is out of the way of the building's occupants. Do not use an extension cord.

CHECKOUT AND OPERATION

CHECKOUT

Before operating the M66V, check out the installation using the following procedures:

1. Make sure the air cleaner is oriented for good air circulation where it will not interfere with personnel and material traffic. Keep out of fire lanes and away from overhead cranes.
2. Check that the tightness of the motion of the arm. If the arm is hard to move or very stiff loosen the bolts on the joints so they are just snug. The bolts on the joints should not be very tight.
3. Be sure that the source capture hood can be placed within 18 inches of the contamination.
4. Make sure that the prefilter and the primary filter are properly oriented and the airflow arrows are pointing toward the blower.

2. The indicator light should be on whenever the blower is on.

3. The filter gauge should be level and should read zero when the M66V is turned off. If it does not read zero, adjust the reading with the adjustment knob on the gauge.

DIRTY FILTER GAUGE

Make a note on how high the pressure gauge reads when the filters are clean. Then when the draw of the air cleaner is no longer adequate make note of what the pressure gauge reads and that is about the time you will need to replace your filter(s). A one-inch rise in static pressure indicates a reduction in air flow of approximately twenty-five percent.

OPERATION

1. Turn on the air cleaner control switch. Make sure the blower is providing a strong discharge. Please note that the M66V air flow was factory-set at the maximum, considering the filter efficiency and other options ordered, such as impingers and plenums.

If decreased air flow is desired, it can be accomplished by adjusting the variable sheave on the motor. It is very important to measure the amperage before and after the adjustments are made on the variable motor sheave to insure that the motor is not overloaded. The rated amperage is listed on the schematic on the filter access door. To adjust the motor sheave, see Adjustments on Page 7.



FIGURE 3 - DIRTY FILTER GAUGE

ADJUSTMENTS

AIR FLOW VOLUME (CFM)

The air flow for the M66V is factory-set at the maximum volume of air. If reduced air flow is desired, it can be accomplished by adjusting the variable motor sheave.

TO ADJUST THE BLOWER CAPACITY:

1. Turn the air-cleaner off, and open the access door to the blower and motor section of the air cleaner.
2. Loosen the two bolts locking the end of the motor rail in position. Remove the belt.
3. Loosen the Allen setscrew on the face of the motor sheave.
4. Rotate the sheave into a position which gives the desired blower capacity.
5. Measure the amperage after the sheave adjustment to insure that you do not exceed the rated amperage.

NOTE: When the sheave is rotated all the way into the shaft, the blower capacity is at its maximum. When the sheave is rotated five turns out on the shaft, the blower capacity is at its minimum. **DO NOT ROTATE THE ADJUSTABLE SHEAVE MORE THAN FIVE TURNS OUT ON THE SHAFT.** The sheave may already be adjusted one or more turns out on the shaft.

CAUTION

Adjusting the variable sheave changes the load on the motor. Do not exceed the rated amperage for the motor.

MAINTENANCE

CAUTION

Always disconnect the power to the M66V before working on or near the air cleaner.

FILTER MAINTENANCE/REPLACEMENT

Dirty air passes through the prefilter. Large particulate, such as lint, is removed by the prefilter. The remaining particulate is then captured by the primary filter.

As the contaminant load on the filters increases, the filters become more efficient in capturing the smaller particles. At the same time, however, the dirty filter

allows less air to pass through, resulting in less particle collection and a decrease in the overall effectiveness of the air cleaner.

The M66V Air Cleaner is equipped with a pressure gauge which indicates the restriction to air flow caused by the filters loading with particulate. When the air filter gauge reaches the red arrow or a noticeable reduction in air flow occurs, it is time to clean or replace the prefilter and possibly the primary filter.

Step 1

Turn off the air cleaner. Open up the filter access doors, and slide out the prefilter.

Step 2

If the particulate is dry, the standard four-inch pleated prefilter can be cleaned by shaking or vacuuming. If the prefilter does not come clean after vacuuming or is saturated with oil, the prefilter should be replaced.

Step 3

Replace the prefilter, and turn on the air cleaner. The reading on the air filter gauge should be at or near the green arrow. If no performance improvement is evident after cleaning or replacing the prefilter, the primary filter will have to be replaced. In most cases, the prefilter can be replaced several times before the primary filter will need to be replaced.

NOTE: An Increase of one Inch on the gauge would be approximately a 25% decrease in air flow. If the reduction in air flow is not a problem, the air cleaner can be operated beyond this point. The red arrow can be moved to the point at which the decrease in air flow becomes a problem.

CARBON MODULE MAINTENANCE (OPTIONAL)

The M66V can be ordered with an optional carbon module. This module is refillable.

WARNING

It is the customer's responsibility to determine the suitability of the carbon filter for any particular application or purpose. The effectiveness of activated carbon must be routinely monitored. In addition, certain substances can combine in the carbon which can result in a fire hazard. Air Quality Engineering accepts no liability for the activated carbon effectiveness or fire hazard.

1. Open the filter access door.
2. Slide the used carbon module out of the filter track which is behind the primary filter track. Caution - the carbon module weighs approximately 60 lbs. Use appropriate means to support the carbon module during service.
3. Refill the carbon module by removing the cover held on by four screws and pouring out the used carbon in an appropriate container. This used carbon must be reactivated or disposed of in the proper manner. Pour in the new or reactivated carbon, and replace the cover and four screws.
4. Slide the module back into the filter track, and close the filter access door.

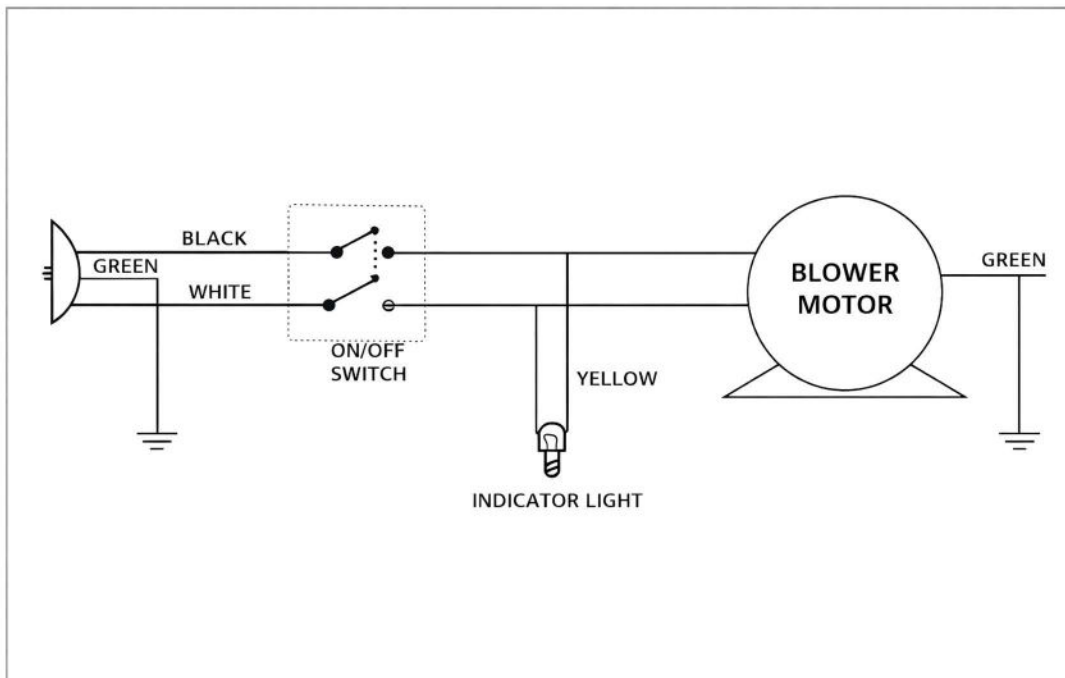
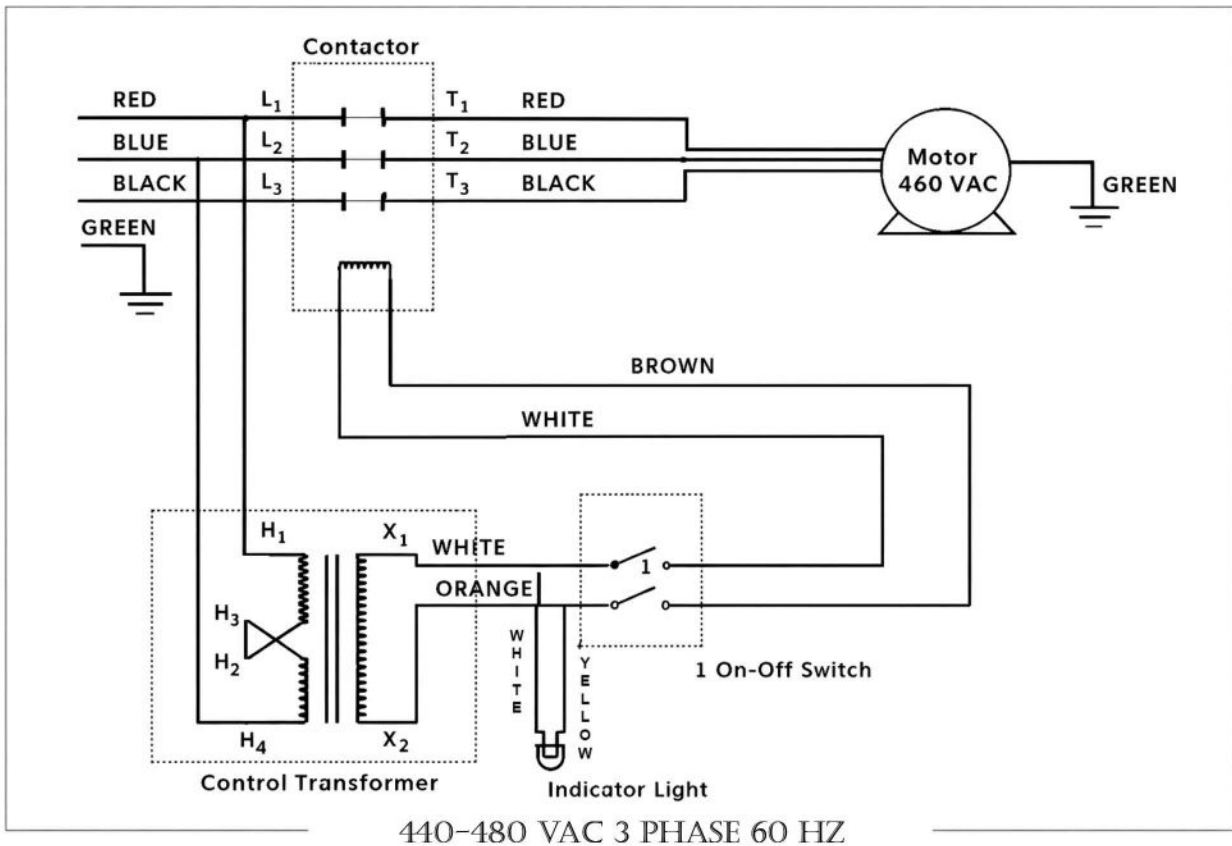
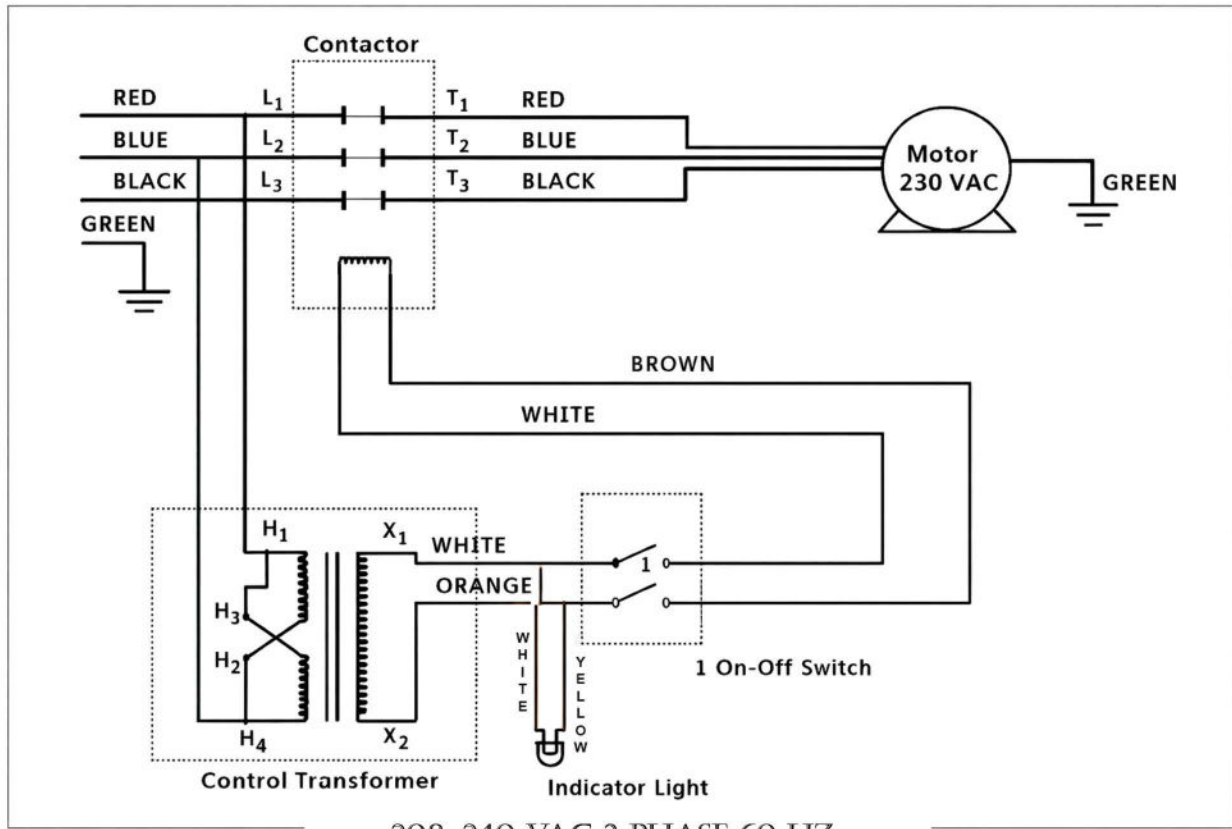


FIGURE 4 - ELECTRICAL SCHEMATIC

SCHEMATICS



PARTS LIST

DESCRIPTION	PART NO.
On/Off Switch	10300
Indicator Light	10097
Dirty Filter Gauge	10219
Prefilter, 4" Pleated	41143
Blower Sheave	30167
Belt	30011
Motor, 1 HP, single phase	40013
Blower	37012
Exhaust Grille	21326
Motor Sheave, Variable	30166
Latch Kit	07265
FILTER OPTIONS	
8-Pocket Bag Filter, 24" × 24" × 21", MERV 15	41072
8-Pocket Bag Filter, 24" × 24" × 21", MERV 13	41056
8-Pocket Bag Filter, 24" × 24" × 21", MERV 11	41055
10-Pocket Bag Filter, 24" × 24" × 25", MERV 15	41233
Extended Service Filter, 24" × 24" × 12", MERV 14	41134
Extended Service Filter, 24" × 24" × 12", MERV 13	41135
Extended Service Filter, 24" × 24" × 12", MERV 16	41160
Contact (3 phase models only)	07078*
Transformer (3 phase models only)	10075

OPTIONAL EQUIPMENT:

DESCRIPTION	PART NO.
Carbon Module, 45 lbs.	07096*
Impinger Assembly	07057

* Extended service filter must be used in place of the standard bag filter when used with the carbon module.



FIGURE 5 - EXPLODED VIEW OF M66V AIR CLEANER

CERTIFICATE OF WARRANTY

THREE-YEAR LIMITED WARRANTY

Air Quality Engineering, Inc. (AQE), warrants to the original purchaser, subject to the conditions below, that if the "Product" covered by this warranty should fail to perform by reason of improper workmanship or material, AQE will during the period of three (3) years from the date of original purchase either (i) replace the product or (ii) provide all necessary parts to repair the product without charge. The decision to replace the product or the necessary parts shall rest solely with AQE. This three-year limited warranty does not apply to main filter elements. AQE will replace without charge the main filter elements during the period of thirty (30) days from the date of original purchase if the main filter elements fail to perform by reason of improper workmanship or material. This warranty is valid only under the following conditions:

CONDITIONS

1. **REGISTRATION:** The purchaser's completion and mailing of the Registration Card to Air Quality Engineering, Inc., 7140 Northland Drive North, Minneapolis, Minnesota 55428-1520 within 30 days of original purchase.
2. **AUTHORIZATION:** The purchaser will contact AQE at (763) 531-9823 for authorization, returned goods number (RGA) and the shipping address. AQE will direct the purchaser to either return the necessary parts or the product at AQE's option.
3. **PROPER DELIVERY:** The shipping, freight prepaid or delivery of the parts or the product to AQE in either its original carton or in a carton assuring similar protection of the product with the returned goods number (RGA) clearly displayed on the outside of the carton.
4. **UNAUTHORIZED REPAIR:** A showing by the original purchaser that the product has not been altered, repaired or serviced by anyone other than an authorized service technician using genuine AQE parts.
5. **UNAUTHORIZED PARTS:** A showing by the original purchaser that the product has had only genuine AQE parts and filters used in its operation and maintenance.
6. **SERIAL NUMBER INTACT:** A showing by the original purchaser that the serial number has not been altered or removed.
7. **MISUSE:** A showing by the original purchaser that the product has not been involved in an accident, freight damaged, misused, abused or operated contrary to the instructions contained in the Owner's Manual.

Air Quality Engineering, Inc.'s, sole responsibility shall be to repair or replace the product within the terms stated above. AQE SHALL NOT BE LIABLE FOR ANY CONSEQUENTIAL DAMAGES RESULTING FROM ANY BREACH OF WARRANTY, EXPRESS OR IMPLIED, APPLICABLE TO THIS PRODUCT. Some states do not allow the exclusion or limitation of consequential damages so this limitation may not apply to you.

THIS WARRANTY IS IN LIEU OF ALL OTHER WARRANTIES, EXPRESS OR IMPLIED, AND THE WARRANTIES OF MERCHANTABILITY AND FITNESS FOR A PARTICULAR PURPOSE ARE HEREBY EXCLUDED BEYOND THE THREE-YEAR DURATION OF THIS WARRANTY. Some states do not allow limitations on how long an implied warranty lasts so the above limitation may not apply to you.

This warranty gives you specific legal rights and you may also have other rights that vary from state to state.

AIR QUALITY ENGINEERING, INC.
7140 NORTHLAND DRIVE NORTH
MINNEAPOLIS, MINNESOTA 55428-1520

TOLL FREE: 1-800-328-0787
TELEPHONE: (763) 531 - 9823
FAX: (763) 531 - 9900

MANUFACTURER & WORLDWIDE DISTRIBUTOR OF SMOKEMASTER® AIR CLEANING SYSTEMS